

SUNSHINE MATH - 2
Earth, XVII

Name: _____
(This shows my own thinking.)

- ★ 1. Kamisha is a traveling salesperson. In two months, she traveled *eighty hundred* miles. How many *thousands* of miles did Kamisha travel?

Answer: _____ thousands

- ★★★★ 2. Use a calculator to do each problem below:

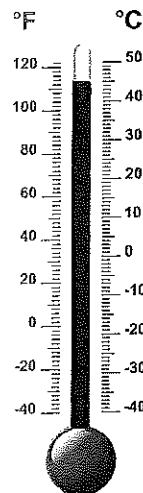
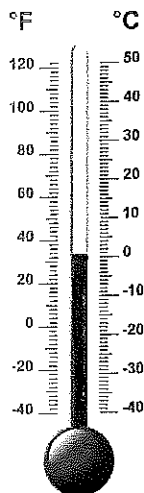
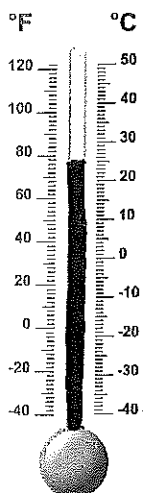
$$25 + 48 + 65 = \underline{\hspace{2cm}} \quad 103 + 22 + 79 = \underline{\hspace{2cm}}$$

$$85 - 38 + 26 = \underline{\hspace{2cm}} \quad 219 + 36 - 95 = \underline{\hspace{2cm}}$$

- ★★ 3. Cindy's mother had four eggs. She bought a dozen more and used up half a dozen making brownies. How many eggs does she have left?

Answer: _____ eggs

- ★★★★ 4. Write the temperature shown on each thermometer. Put your answer on the line beside the thermometer.



- ★★★★ 5. Pet's Pleasure is the only dog food Honey will eat. It is sold in packages that contain 6 servings. Honey eats 5 packages a month. How many servings of Pet's Pleasure does she eat?



Answer: _____ servings

- ★★ 6. This table shows bowling scores for four months.

	Sally	Saul	Sal
June	141	189	176
July	187	198	211
Aug.	175	131	185
Sept.	146	165	186

If the scores were rounded to the nearest hundred, during which month would *each* bowler have a 200 average?

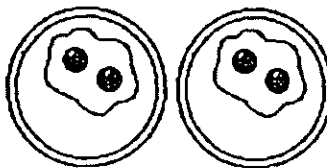
Answer: _____

- ★★★★ 7. I am less than 20 years old. Count by 3's and you say my age. Count by 5's and say my age. How old am I?

Answer: _____

- ★★★★ 8. A *doubles fact* means a number is added to itself. $2 + 2 = 4$ and $5 + 5 = 10$ are *doubles facts*. Write the *doubles fact* for each picture below:



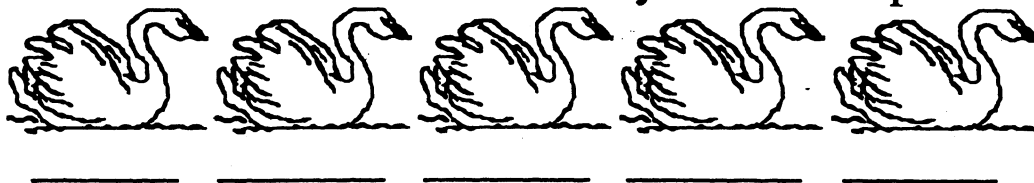




SUNSHINE MATH - 2
Earth, XVIII

Name: _____
(This shows my own thinking.)

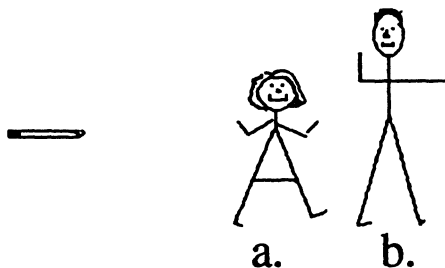
- ★★★ 1. Five swans are swimming in a line. Freida is ahead of Margie. Sandra is behind Margie. Billy is between Sandra and Margie. Clint follows Sandra. Label the swans below to show how they are lined up.



- ★ 2. Marita's mom travels to different towns each day. She leaves at 4:00 a.m. and returns at 3:00 p.m. She traveled 50 miles on Monday morning and 20 miles Monday afternoon. How far did she go on Monday?

Answer: _____ miles

- ★★ 3. Use the pencil shown below as your unit of measure. Estimate how tall the figures are to the nearest whole pencil.



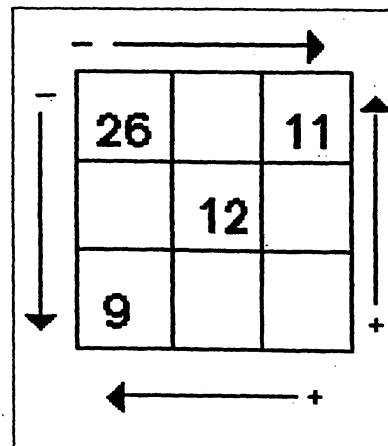
Answers: a _____ pencils b _____ pencils

- ★ 4. I had 34¢. I lost a dime. How much money do I have now?

Answer: _____ ¢

- ★★ 5. Finish filling in the box with numbers by adding and subtracting. Subtract and add in the directions shown by the arrows.

(Hint: In the top row, 15 goes between 26 and 11 since $26 - 15 = 11$.)



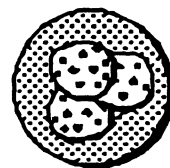
- ★★ 6. A ribbon is 20 inches long. If you cut it with a pair of scissors into one-inch pieces, how many snips would it take?

Answer: _____ snips

- ★★★ 7. Tanya guessed there were 65 beans in a jar. Her guess was off by 20. Bryan guessed there were 35 beans in the jar. He was off by 10. How many beans are in the jar?

Answer: _____ beans

- ★★★ 8. Each cookie has 10 chocolate chips in it. How many chocolate chips are in a box of 25 cookies?

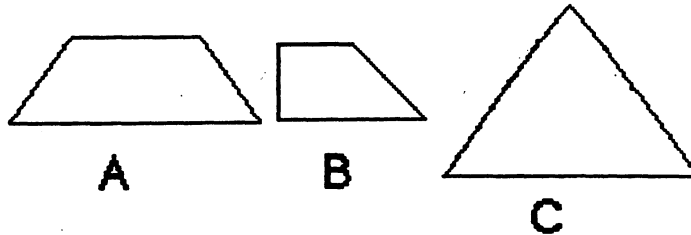


Answer: _____ chocolate chips

SUNSHINE MATH - 2
Earth, XIX

Name: _____
(This shows my own thinking.)

- ★★★ 1. Draw lines to show equal parts. Divide pictures A and B into 3 equal parts. Divide picture C into 4 equal parts.



- ★★ 2. Press the keys below on your calculator. Record your answer on the line.

A. $\boxed{4} \boxed{+} \boxed{4} \boxed{=} \boxed{=} \boxed{=} \boxed{=} \boxed{=} \boxed{=} \boxed{=} \boxed{=} \boxed{=} \rightarrow$ _____

B. $\boxed{4} \boxed{\times} \boxed{10} \rightarrow$ _____

- ★★★ 3. Princess Dianne counted the golden buttons on her 2 royal robes. One robe had 2 buttons. The other robe had 20 buttons. Her sister, Princess Joy, had 5 robes with 4 golden buttons on each robe.

Which princess had more golden buttons? _____

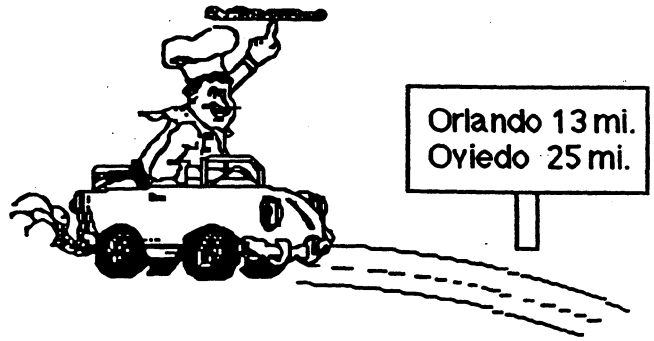
How many more? _____

- ★★ 4. A movie begins at 11:00 a.m. and runs for one and a half hours. What time will the movie be over?

Answer: _____

- ★ 5. How many miles from Orlando to Oviedo?

Answer: _____ miles



- ★★ 6. My name costs \$13. Look at the letter prices. Is my name Jan, Meg, or Ann?

Letters:
\$3 each

A B C
D E F
G H I
J K L

Letters:
\$5 each

M N O
P Q R
S T U
V W X

Answer: _____

- ★ 7. Christmas Day, December 25th, came on Friday one year. How many Sundays were left in that year?

Answer: _____ Sunday(s)

- ★★★ 8. Write the standard numeral for these expanded numerals.

A. $70 + 6 + 300 =$ _____

B. $4 + 500 =$ _____

C. $200 + 5 + 60 =$ _____